

04173C

PERIMETER

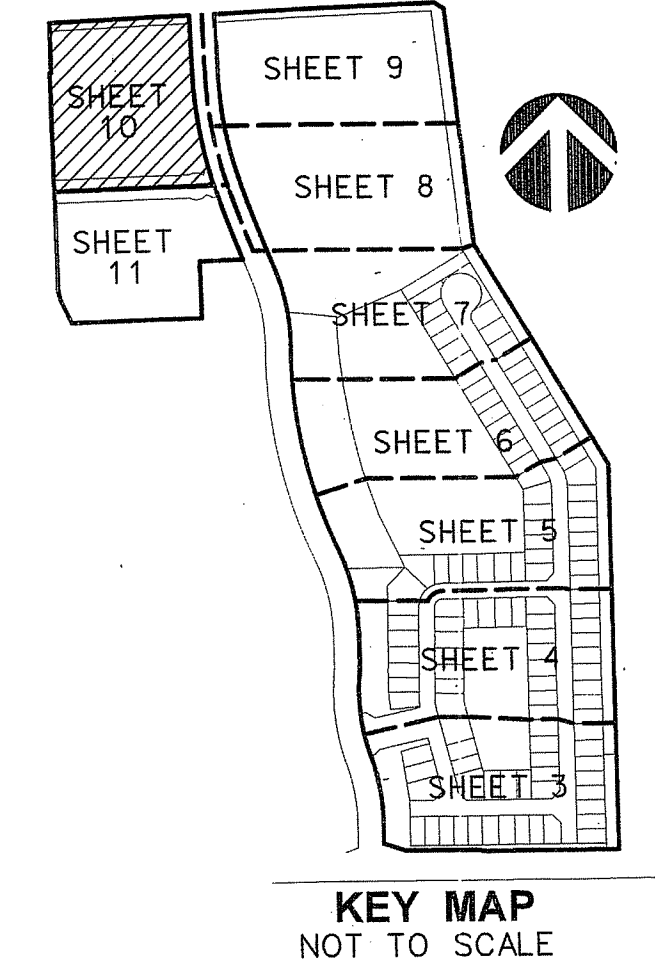
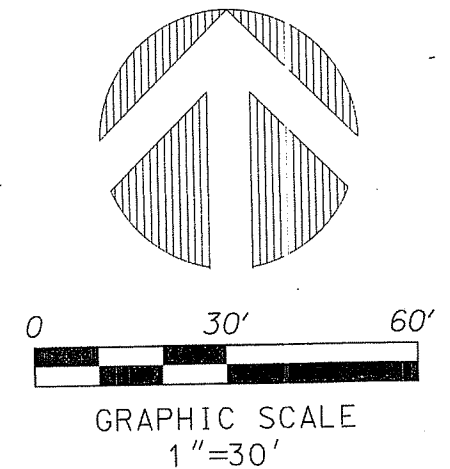
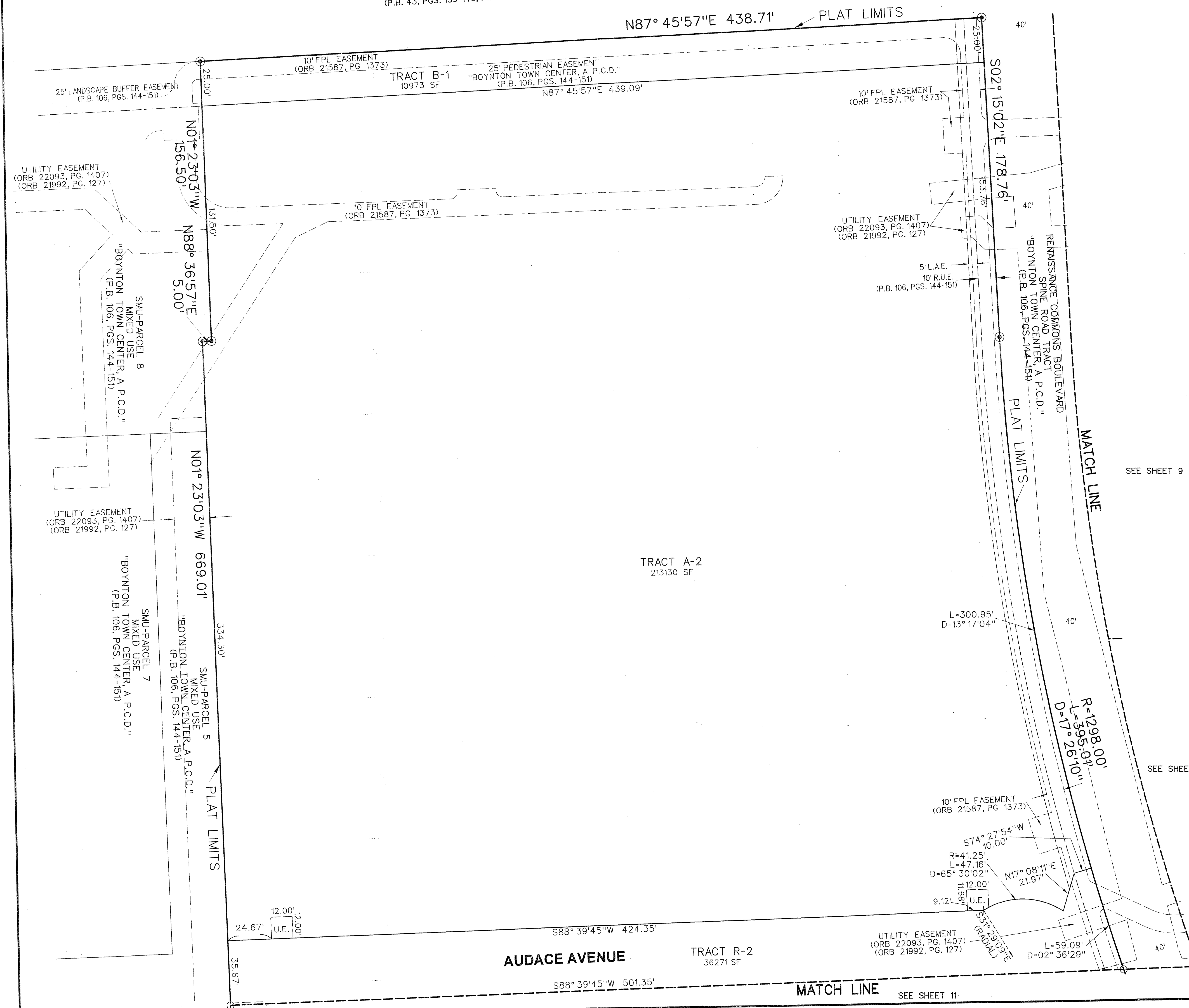
SURVEYING & MAPPING
Prepared by: Jeff S. Hodapp, P.S.M.
Certificate of Authorization No. LB7264
947 Clint Moore Road
Boca Raton, Florida 33487
Tel: (561) 241-9888
Fax: (561) 241-5182

CORTINA PUD REPLAT TWO

A REPLAT OF ALL OF "CORTINA PUD REPLAT" (P.B. 109, PGS. 196-202, P.B.C.R.) AND PORTIONS OF "BOYNTON TOWN CENTER, A P.C.D." (P.B. 106, PGS. 144-151, P.B.C.R.)
SECTION 20, TOWNSHIP 45 SOUTH, RANGE 43 EAST
CITY OF BOYNTON BEACH, PALM BEACH COUNTY, FLORIDA.
FEBRUARY, 2016

89

C. STANLEY WEAVER CANAL
(BOYNTON CANAL C-16)
210' CANAL RIGHT-OF-WAY
(D.B. 118, PG. 518, P.B.C.R.)
(P.B. 7, PG. 20, P.B.C.R.)
(P.B. 43, PGS. 139-140, P.B.C.R.)



SHEET 10 OF 11

LEGEND:

- SET P.R.M. (UNLESS OTHERWISE NOTED)-4" x 4" CONC. MON. WITH ALUMINUM DISK STAMPED "LB7264"
 - ⊙ P.C.P. CENTERLINE
 -
 -
 - ⊙
- ### ABBREVIATIONS:
- AC. ACRES
 - CHB CHORD BEARING
 - CONC. CONCRETE
 - COR. CORNER
 - D DELTA (CENTRAL ANGLE)
 - D.E. DRAINAGE EASEMENT
 - L ARCLength
 - L.A.E. LIMITED ACCESS EASEMENT
 - L.B. LICENSED BUSINESS
 - L.B.E. LANDSCAPE BUFFER EASEMENT
 - L.M.E. LAKE MAINTENANCE EASEMENT
 - L.S. LICENSED SURVEYOR
 - L.S.E. LIFT STATION EASEMENT
 - L.W.D.D. LAKE WORTH DRAINAGE DISTRICT
 - MON. MONUMENT
 - O.R.B. OFFICIAL RECORDS BOOK
 - N.R. NON-RADIAL
 - P.B. PLAT BOOK
 - P.B.C.R. PALM BEACH COUNTY RECORDS
 - PG. PAGE
 - P.C.P. PERMANENT CONTROL POINT
 - P.O.B. POINT OF BEGINNING
 - P.O.C. POINT OF COMMENCEMENT
 - P.R.M. PERMANENT REFERENCE MONUMENT
 - P.S.M. PROFESSIONAL SURVEYOR & MAPPER
 - P.U.D. PLANNED UNIT DEVELOPMENT
 - R RADIUS
 - R/W RIGHT-OF-WAY
 - R.U.E. ROAD AND UTILITY EASEMENT
 - SEC. SECTION
 - S.F. SQUARE FEET
 - U.E. UTILITY EASEMENT